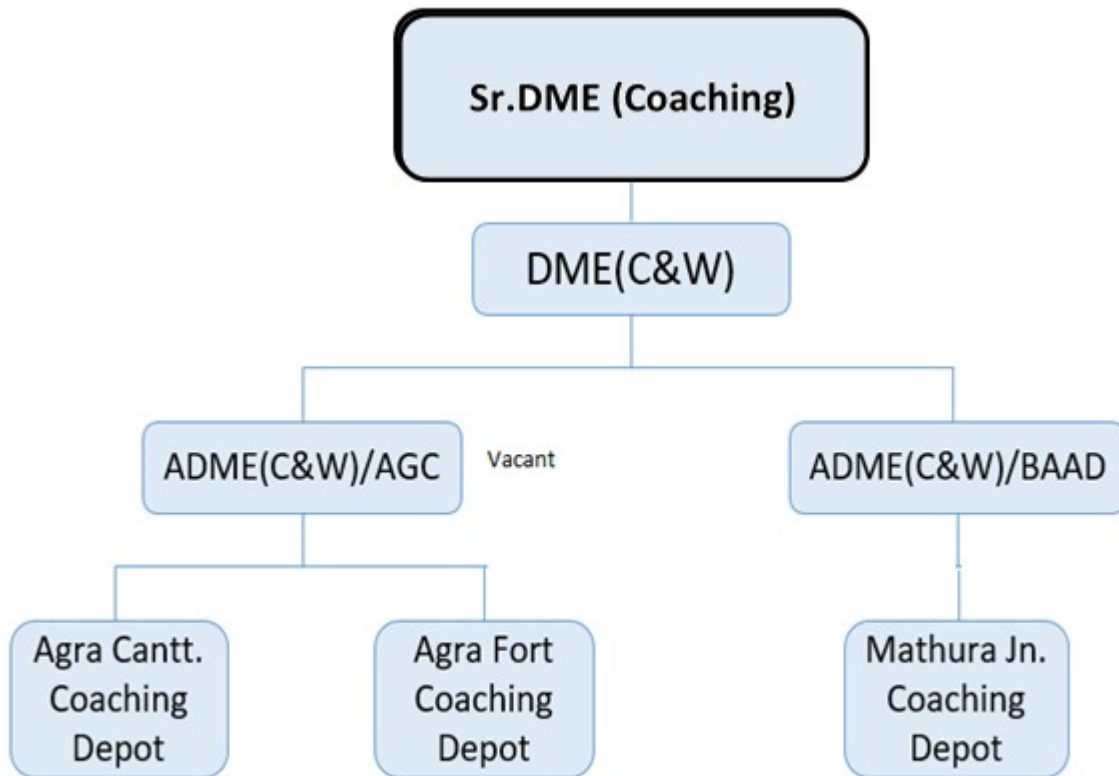


Mech(C&W) Agra Division Overview

Organization Structure:- Carriage and wagon department is headed by Shri R K Verma, Sr.DME(Coaching), assisted by DME/C&W/Agra-01, ADME/C&W/AGC – 01 & ADME/C&W/BAAD - 01



WORKING CENTRE OF C&W Agra Division:

- AGRA CANTT. C&W DEPOT/ SICKLINE.
- AGRA FORT C&W DEPOT
- MATHURA C&W DEPOT

Coaching Depot, Agra Cantt.

Coaching Depot AGC is engaged with Primary and Terminal Examination of Mail/Express, Passenger trains. At AGC originating, terminating, rolling-in/out examination and watering on complaint of en-route Mail/Express trains are being done.

Work load

1. Primary maintained trains at AGC

SN	Train No.	Ex – To	Train name	Load	Maint Frequency
1	12547/48 Rake 02(LHB)	AGC-SBIB	AGC-SBIB Express	22 =44	04 days in a week
2	12177/78 (LHB)	MTJ-HWH	Chambal Express	22=44	Weekly
3	20975/76 (LHB)	AGC-HWH	Chambal Express	22=44	Weekly
4	11905/06	AGC-HSX	Hoshiarpur Express	18=36	04 days in a week
5	11901/02	AGC-JHS	Passenger	12=24	04 days in a week
6	20175/76	AGC-BSBS	Vande Bharat	16=32	Daily (PM - Wednesday)

2. Secondary Maintenance: Nil

3. Turn Round Attention

S. N.	Train No.	Train	Station	Dep./Arr. Time	Train Frequency	Terminating examination frequency	PM/SM/RBPC	Load
Agra Cantt.								
1.	12162/61	LASHKAR EXP.	AGC	19.45/15.20	Saturday	Weekly	RBPC	22 LHB
2.	11905/06	AGC-HSX EXP.	AGC	19.10/10.50	Daily	Thrice in week	PM at AGC	18 ICF
3.	13168/67	AGC-KOAA EXP.	AGC	05.05/15.40	Saturday/Friday	Weekly	RBPC	22 LHB
4.	14211/12	AGC-NDLS EXP.	AGC	05.30/21.30	Daily	Daily	RBPC	22 LHB
5.	11902/01	AGC-VGLJ EXP.	AGC	06.10/21.40	Daily	Thrice in week	PM at AGC	12 ICF
6.	20982/81	AGC-UDZ-AGC VB	AGC	15.00/14.30	Mon, Thu, Sat	Thrice in week	PM at UDZ with RBPC	08 VB

4. Other activities:

- 4.1 Maintenance of Inspection Carriages.
- 4.2 Complaints of Goods train.
- 4.3 Maintenance of Fire Extinguishers of Mechanical department over Agra Div.
- 4.4 Flying Squad works in section.
- 4.5 Maintenance of ART & ARME and rescue work.
- 4.6 Divisional Control (C&W) Management
- 4.7 Attention of the Sick Wagons Detached by Traffic.
- 4.8 Attention to HABD (Qty:3 nos) Alarms (DHO-MIA section near gate no. 470, installed at DN Main line & 3rd line, UDMR-HAB section at 1438/11 KM).

5. Major Infrastructure Facilities

SN	Description	Qty	Capacity
1	Automatic coach washing plant	01 nos	
2	Pit line with Catwalk (CAMTECH Design)	02 nos	26 coaches (650 m)
3	Sick line shed having 04 nos. maintenance Pit (with 15 Ton EOT)	80 X 20 mtr (1600 sqmtr)	06 coaches
4	Sick line service Building	(80 X7.5 mtr)X2 (1200 sqmtr)	
5	Depot Store Building	140 sqmtr	
6	New BTC Building	(40 X7.5 mtr) (300 sqmtr)	
7	Service Building for Rake Maintenance	160 sqmtr	
8	Overhead water Tank	01 nos	225000 ltrs
9	Linen Room	01 no	
10	Bio-Toilet Lab	01 no	
11	CNC Underfloor wheel lathe	01 no.	BG coach
12	Water Recycling Plant	01 no.	0.5 MLD
13	Quick Watering System at AGC station	01 set	

6. Major M&Ps available:

15 Ton EOT, Electric & Diesel Air compressors with Air Drier, DG sets (250 KVA & 63KVA each), Forklifter, Platform truck, Synchronising jacks, Hydraulic jacks, SCTR

COACHING DEPOT, AGRA FORT

Coaching depot AF is engaged with Primary Maintenance of Mail/Express, Passenger trains. At AF originating, terminating, rolling-in/out examination and watering on complaint of en-route Mail/Express trains and en-route unusual attention of Coaching and Freight are being done.

Work load

1. Primary Maintained trains at AF

SN	Train No.	Ex – To	Train name	Load	Maint. Frequency
1	12195/96	AF-AII	Intercity Express	19=38	Twice in week
2	12179/80	AF-LJN	Intercity Express	17=34	Twice in week
3.	51901/02	AF-ETAH	AF-ETAH Express Special	7=14	Daily

2. Secondary Maintenance: Nil

3. Trains Turn Round Attention:-

Agra Fort								
S. N.	Train No.	Train	Station	Dep./Arr. Time	Train Frequency	Terminating examination frequency	PM/SM/RBPC	Load
1.	12195/96	AF-AII I/C EXP.	AF	06.00/21.40	Daily	5 days in week	PM at AF	19 ICF
2.	22988/87	AF-AII Exp.	AF	14.40/12.40	Daily	Daily	RBPC	22 LHB
3.	15055/56	AF-RMR Exp.	AF	20.50/06.55	Tue, Fri, Sun.	Thrice in week	RBPC	15 ICF
4.	12180/79	AF-LJN. EXP.	AF	06.31/21.49	Daily	5 days in week	PM at AF	17 LHB
5.	59814/19 817	AF-KOTA Passenger	AF	06.45/04.40	Daily	Daily	RBPC	14 ICF
6.	19818/59 813	JAB-RTM EXP	JAB	18.55/18.25	Daily	Daily	RBPC	14 ICF
7.	55334/33	AF-KSJ Passenger	AF	15.40/13.20	Daily	Daily	RBPC	ICF
8.	51901/02	AF-ETAH Passenger	AF	17.25/10.25	Daily	Daily	RBPC	07 ICF

4. Other activities:-

- 4.1 Attention Complaints of Goods trains.
- 4.2 Flying Squad works in section for unusual attention
- 4.2 Sick Wagons Detached by Traffic
- 4.3 Attention to HABD (Qty:3 nos) Alarms (KBP-CHLR section near LC-03, BW-KPO section near LC-95, BR-BXN section near LC-06)

5. Major Infrastructure Facilities:-

- 5.1 Coaching Sick line NIL
- 5.2 Examination Pit line 01 no. (22 Coaches, without Catwalk)
- 5.3 Stabling line NIL

6. M&P Position:

Diesel air compressor with air drier, Platform truck, Hydraulic jacks, RTR, Welding transformer

An over view Coaching Depot, MTJ

Coaching depot MTJ is engaged with Rake Maintenance of Mail/Express, Passenger trains. At MTJ originating, terminating, Rolling-in/out examination of en-route Mail/Express trains and En-route unusual attention of Coaching and Freight trains are being done.

Work load:

1. Primary maintained trains at MTJ

SN	Train No.	Ex - To	Train name	Load	Maint Frequency
1	51973/74	MTJ-JP	Passenger	12=24	Twice in week
2	51971/72	MTJ-AWR	Passenger	12=24	Twice in week

2. Secondary Maintenance: Nil

3. Trains Turn Round Attention at MTJ

Mathura								
S. N.	Train No.	Train	Station	Dep./Arr. Time	Train Frequency	Terminating examination frequency	PM/SM/RBPC	Load
1.	15110/09	MTJ-CPR EXP.	MTJ	23.50/21.30	Mon, Wed, Fri	Thrice in week	RBPC	22 LHB
2.	14726/25	MTJ-BNW EXP.	MTJ	12.35/13.50	Daily	Daily	RBPC	11 ICF
3.	20489/90	BME-MTJ EXP.	MTJ	12.15/15.45	Mon, Wed, Thu, Sat, Sun.	5 days in week	RBPC	16 LHB
4.	19110/09	MTJ-KOTA MEMU EXP.	MTJ	05.00/00.35	Daily	Daily	RBPC	12 MEMU
5.	51973/74	MTJ-JP Passenger	MTJ	07.25/22.45	Daily	5 days in week	RBPC	12 ICF
6.	51971/72	MTJ-AWR Passenger	MTJ	09.45/17.45	Daily	5 days in week	RBPC	12 ICF
7.	55336/35	MTJ-KSJ Passenger	MTJ	21.00/13.50	Daily	Daily	RBPC	ICF
8.	55340/39	MTJ-KSJ Passenger	MTJ	05.45/23.40	Daily	Daily	RBPC	ICF
9.	54794/93	MTJ-SWM Pass.	MTJ	14.00/11.35	Daily	Daily	RBPC	ICF
10.	69160/59	MTJ-BXN MEMU	MTJ	06.10/19.40	Daily	Daily	RBPC	MEMU
11.	64905/64 910	MTJ-NDLS EMU Shuttle	MTJ	04.30/22.35	Daily	Daily	PM at CPYZ	EMU
12.	64903/04	MTJ-GZB EMU Shuttle	MTJ	05.30/20.40	Daily	Daily	PM at CPYZ	EMU

4. Other activities:

- 4.1 Goods trains Complaints attention.
- 4.2 Enroute unusual/failure attention.
- 4.3 Attention to the Sick Wagons Detached by Traffic
- 4.4 Attention to HABD (Qty:3 nos) Alarms (SHLK-HDL section at 1453 KM UP main line & 3rd line, GZKA-OTD at 1512 KM).

5. Major Infrastructure Facilities

- | | | |
|-----|-----------------------------|--------------------------------------|
| 5.1 | Examination Pit line | 01 no. (13 Coaches, without Catwalk) |
| 5.2 | Washable Apron with Catwalk | 01 no. (10 coaches) |
| 5.3 | Washable Apron line | 01 no. (24 Coaches) |

7. M&P Position:

Electric and diesel compressors, RTR, welding transformer, Hydraulic jacks